

# VERSCHATTUNGSSTUDIE 2 - NO

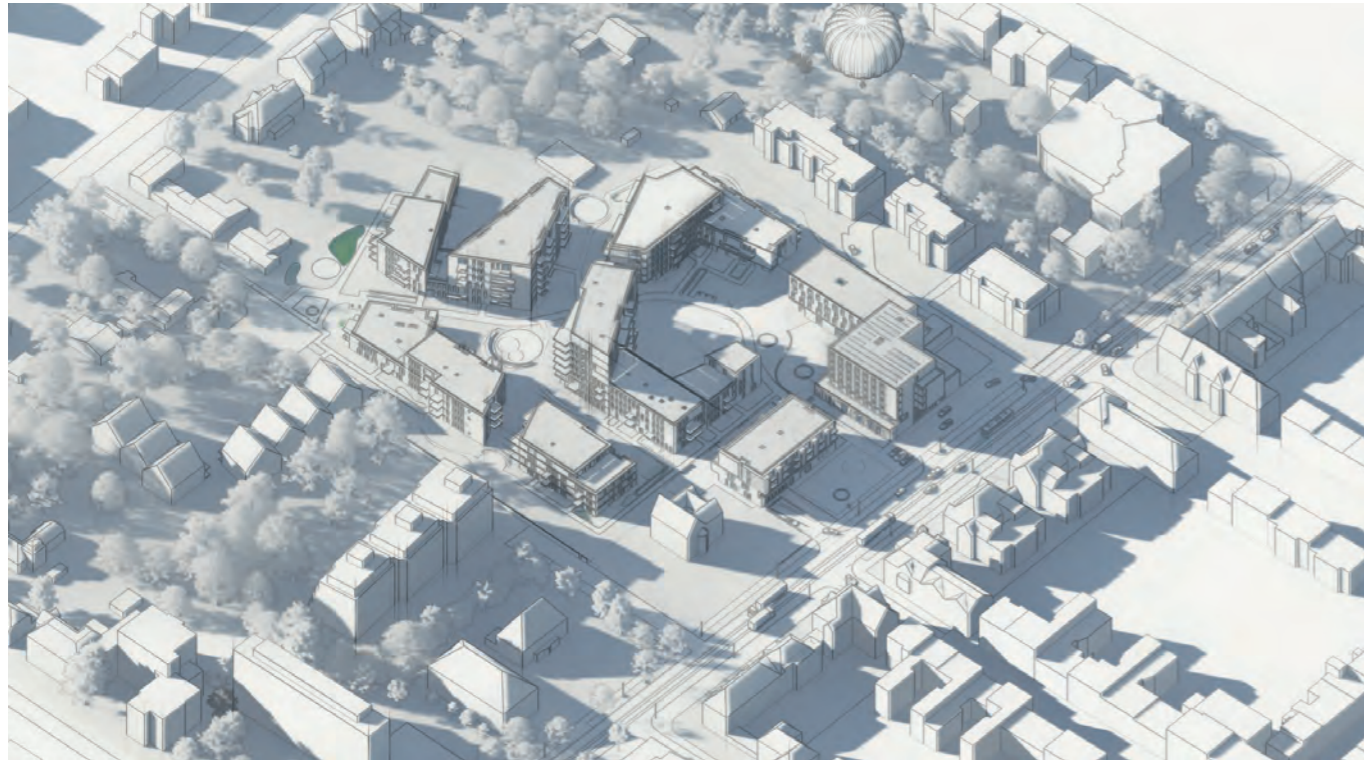
Vorhabenbezogenen Bebauungsplan  
Nr. 841 (V) - „Südlich Uerdinger Straße“

**Verfasser:**  
formA Architekten  
Lebá Rübsamen Partnerschaft mbB  
Spichernstraße 38  
50672 Köln  
**Ansprechpartner:**  
Herr Wolf Lebá  
Herr Helmut Rübsamen

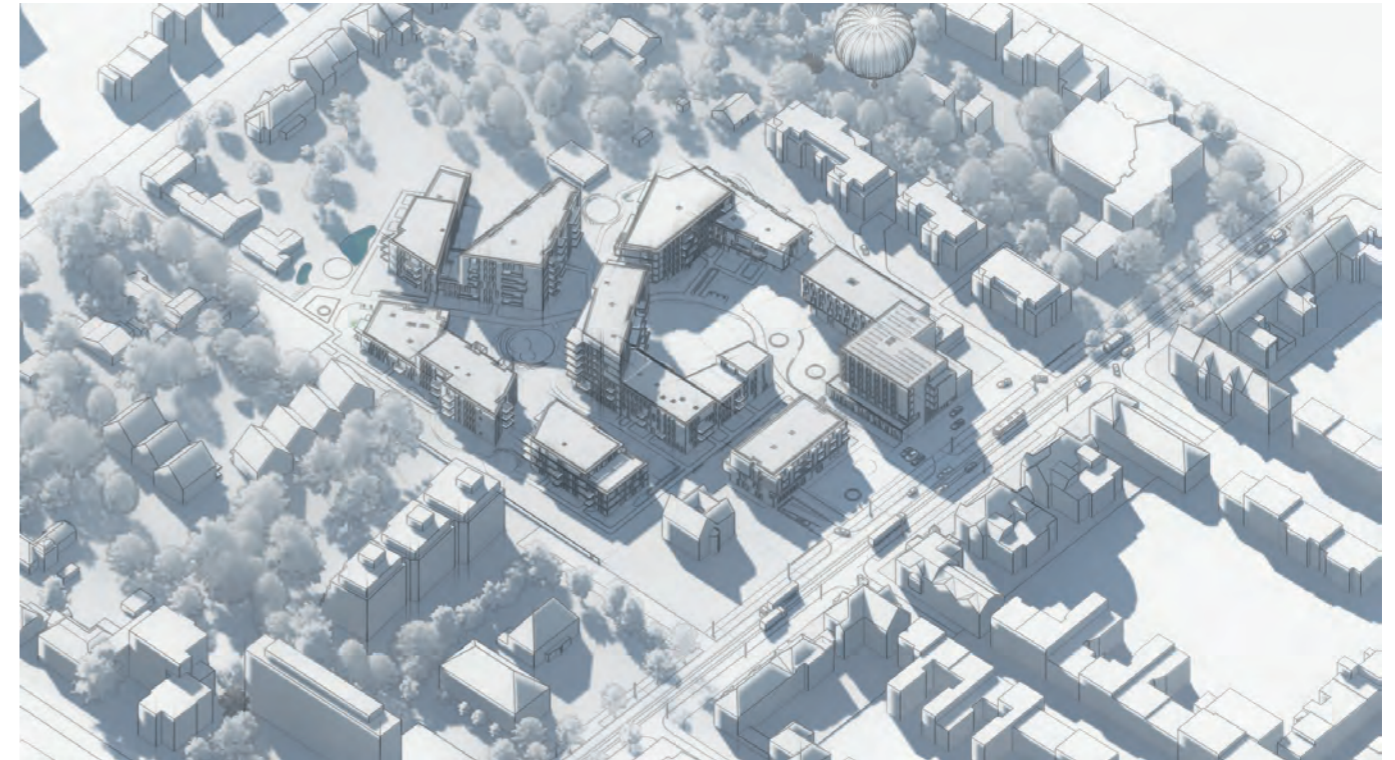
**Stand: Januar 2023**

**Allen Untersuchungen liegen die GPS-Geodaten der Stadt Krefeld  
51° 20' 19,68'' N / 6° 35' 7,08'' E  
zugrunde**

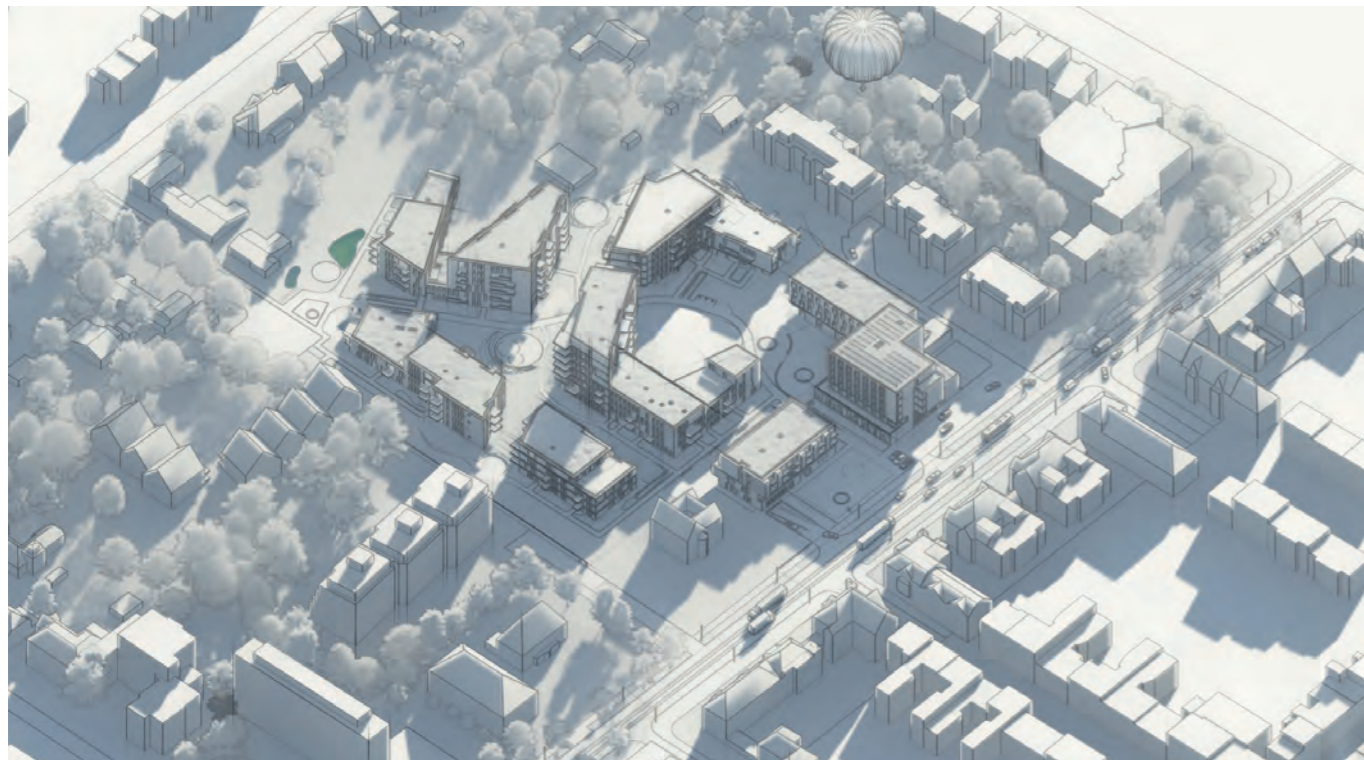
**hergestellt mit:**  
ALLPLAN 2022/ LUMION 11 in isometrischer Darstellung



10 Uhr



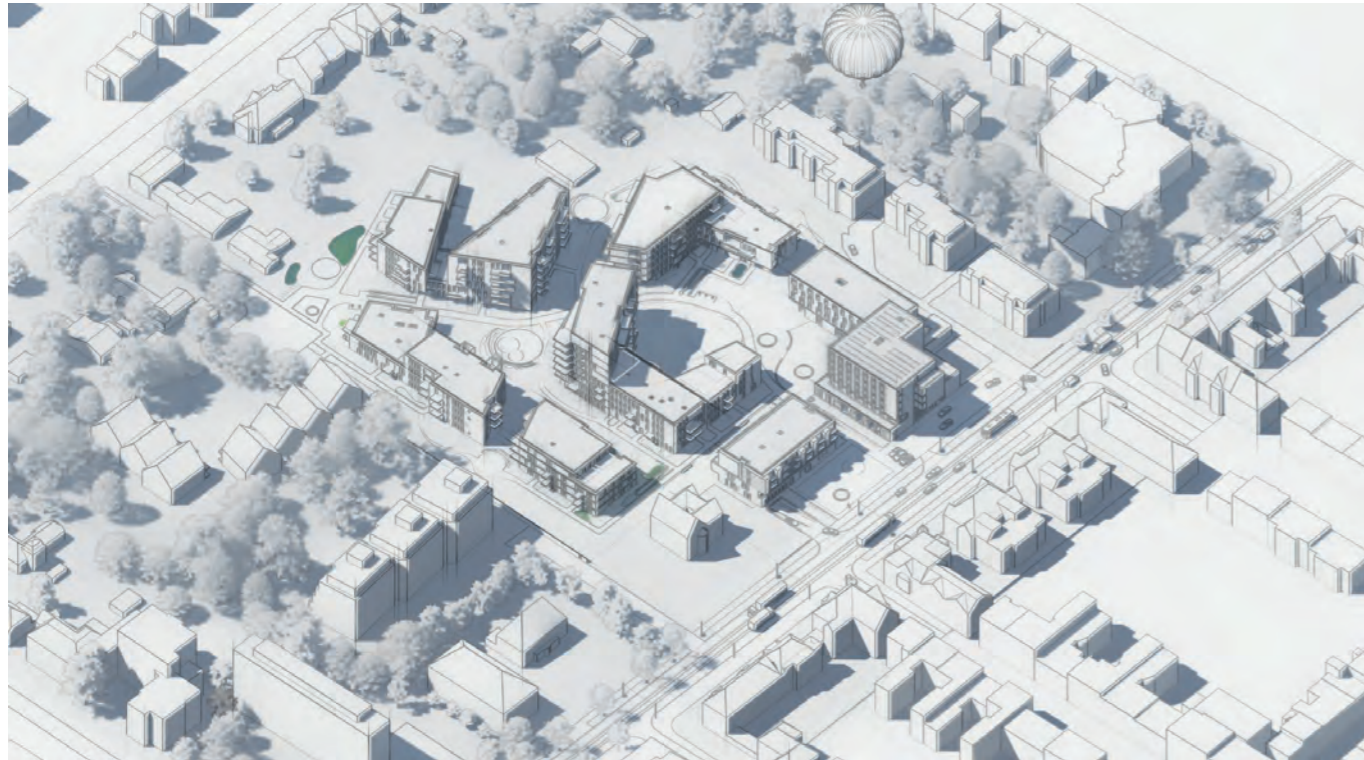
13 Uhr



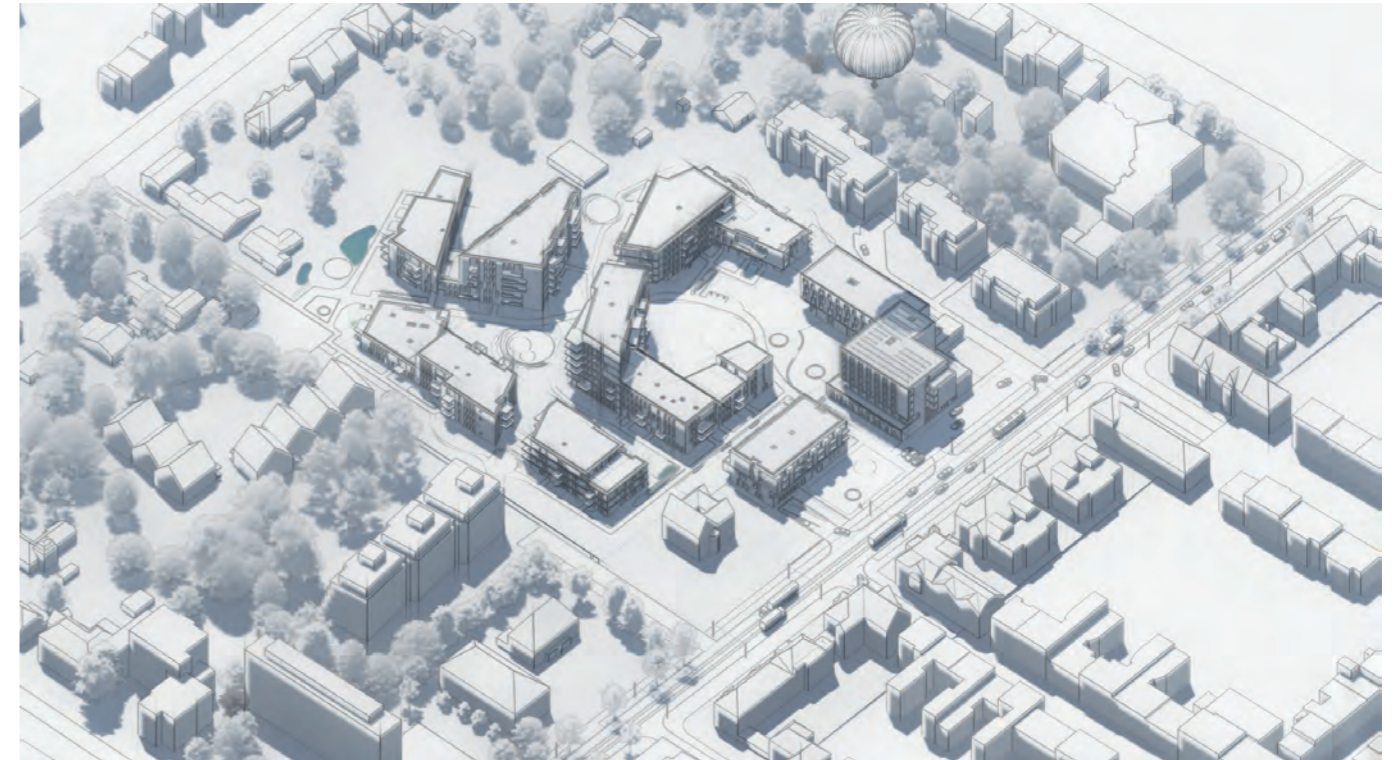
16 Uhr

Verschattungssituation, isometrisch  
Uerdinger Straße 245, 47800 Krefeld  
51° 20' 19,68'' N / 6° 35' 7,08'' E

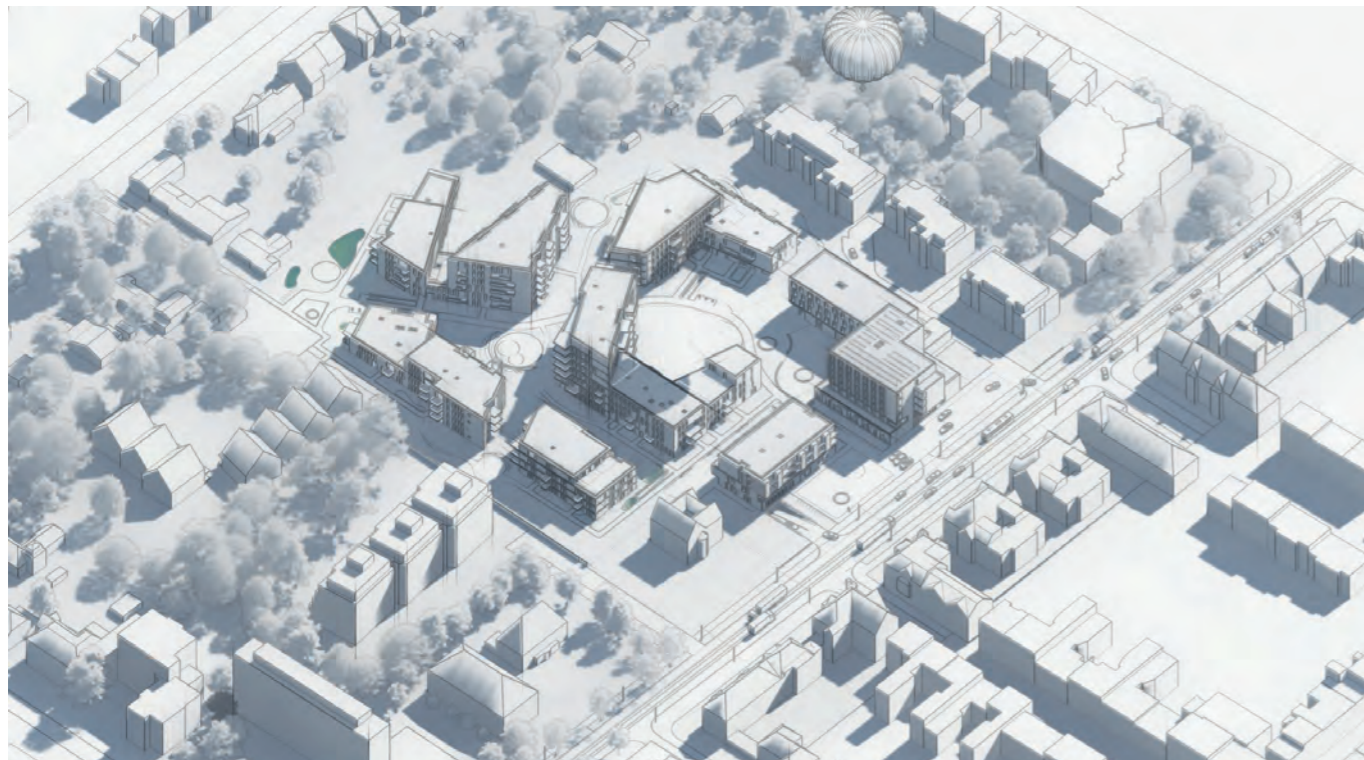
1. MÄRZ



10 Uhr



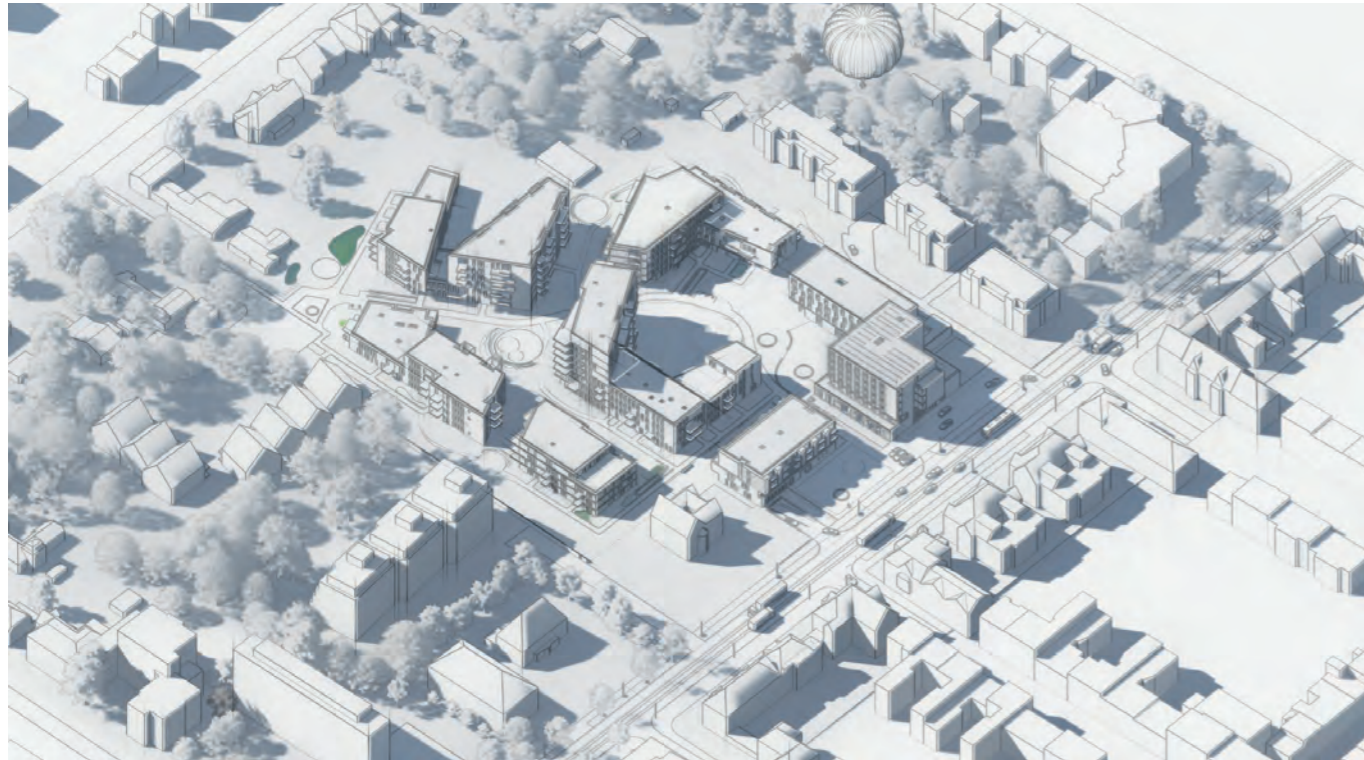
13 Uhr



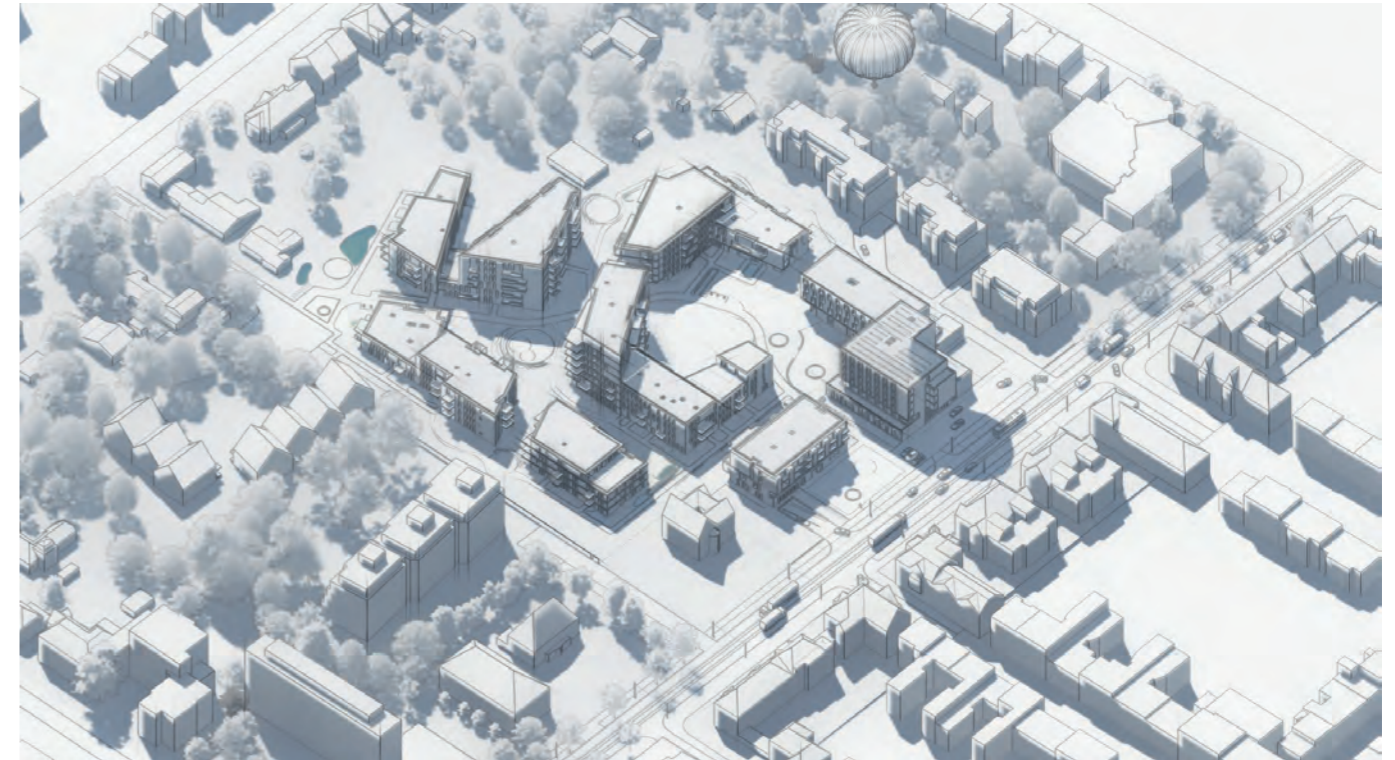
16 Uhr

Verschattungssituation, isometrisch  
Uerdinger Straße 245, 47800 Krefeld  
51° 20' 19,68'' N / 6° 35' 7,08'' E

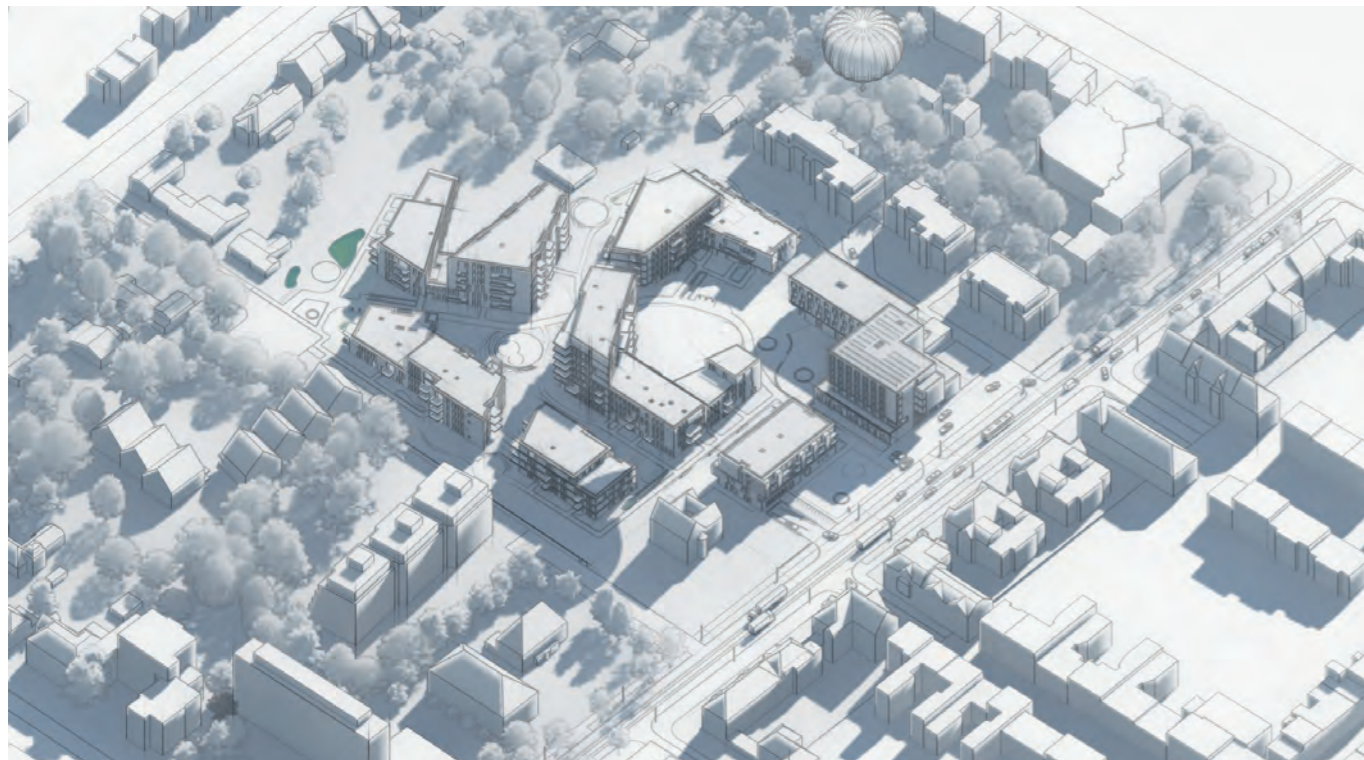
1. JUNI



10 Uhr



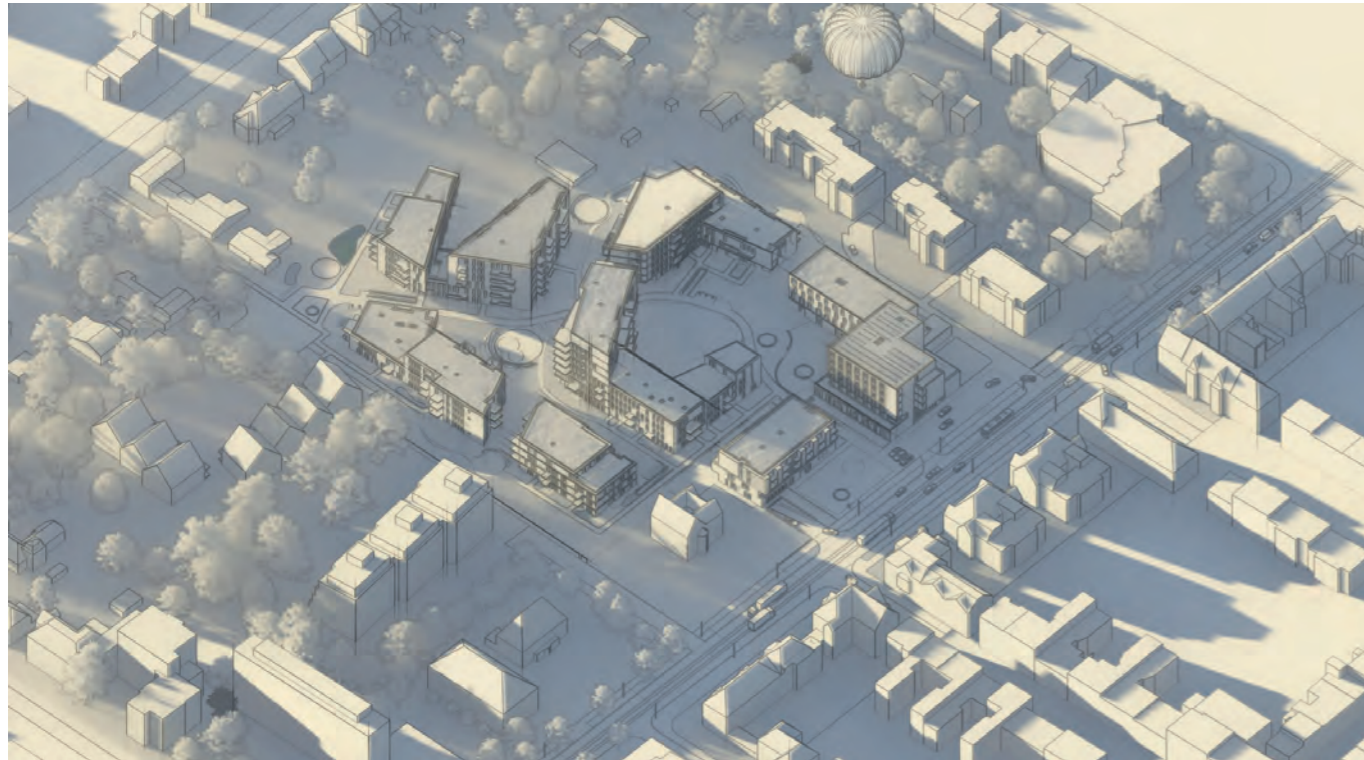
13 Uhr



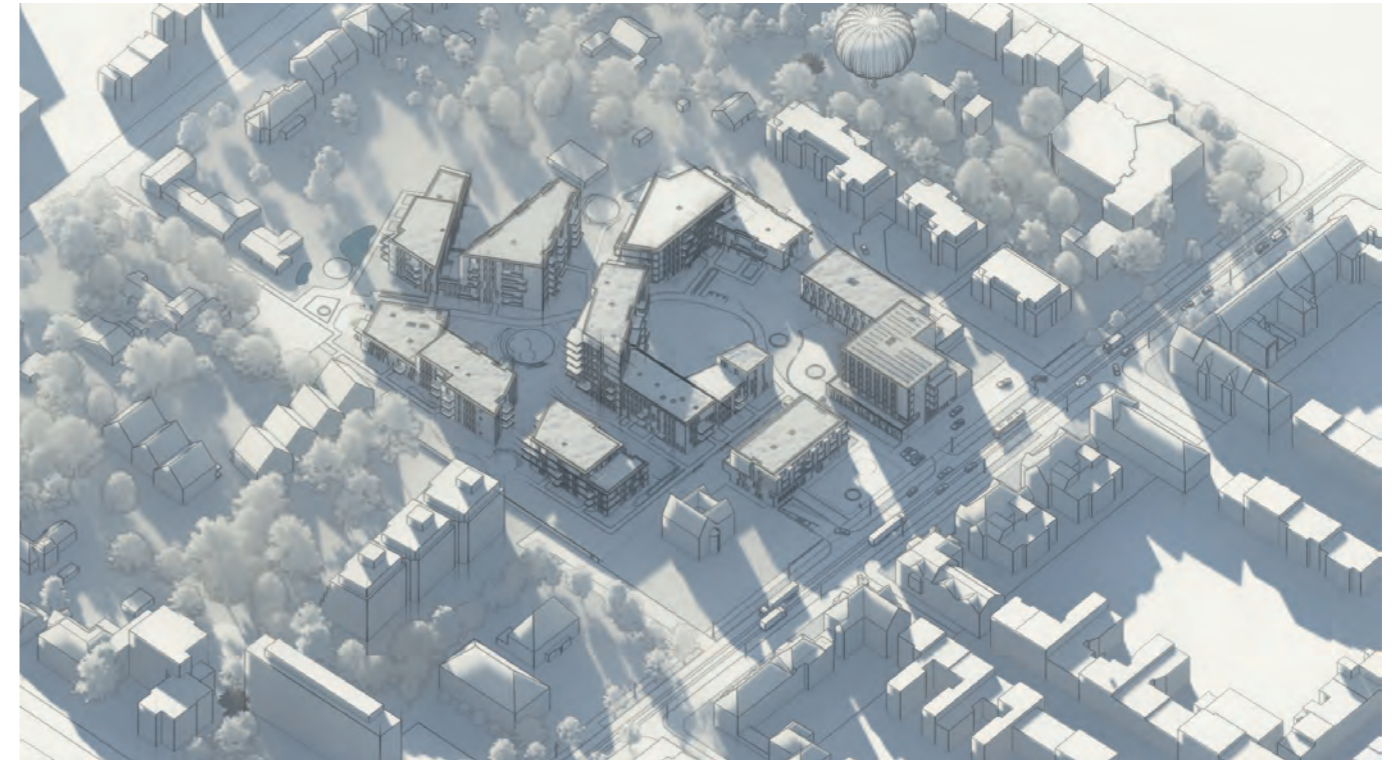
16 Uhr

Verschattungssituation, isometrisch  
Uerdinger Straße 245, 47800 Krefeld  
51° 20' 19,68'' N / 6° 35' 7,08'' E

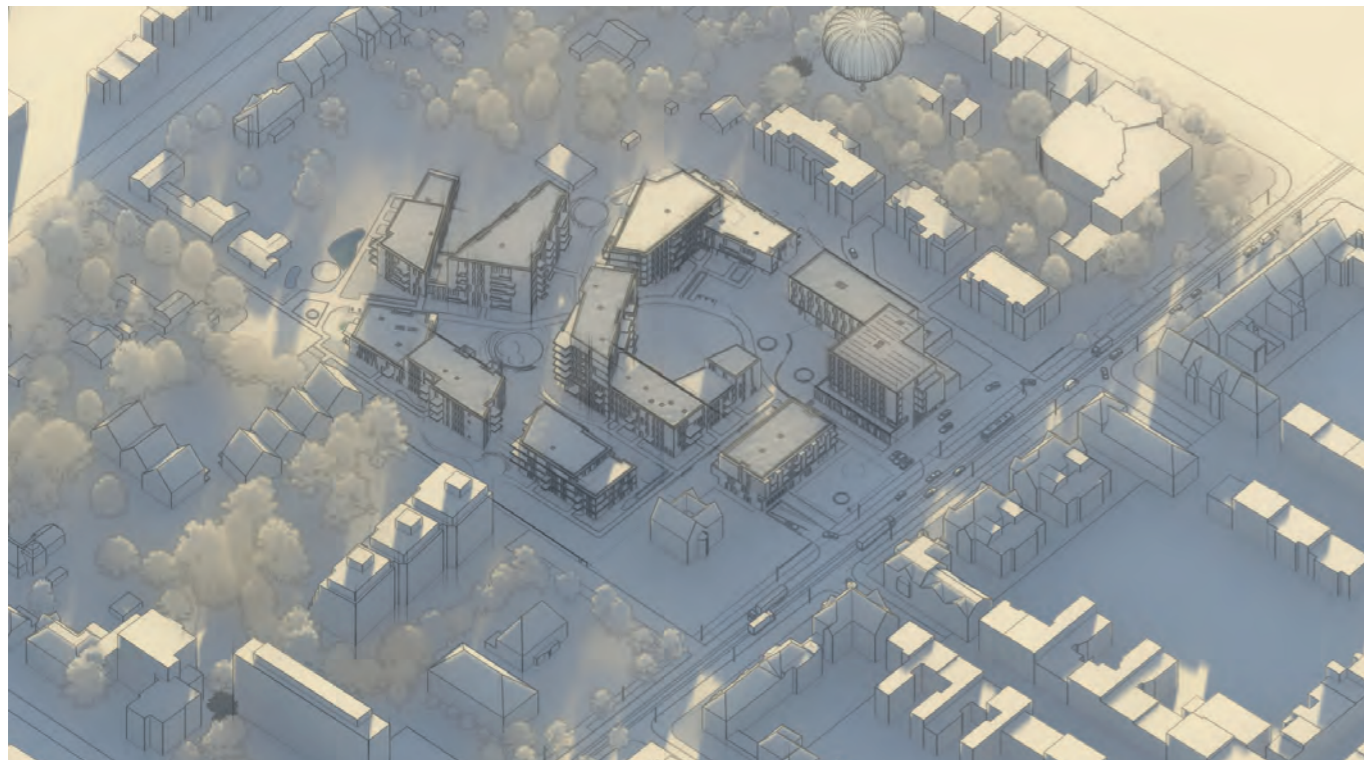
1. SEPTEMBER



10 Uhr



13 Uhr



16 Uhr

Verschattungssituation, isometrisch  
Uerdinger Straße 245, 47800 Krefeld  
51° 20' 19,68'' N / 6° 35' 7,08'' E

1. DEZEMBER